

Continental 
The Future in Motion



Bright Lights are coming.

NightViu® Working Lights for agriculture.

Bright Lights – Big Benefits.

This is how NightViu® Working Lights make your agricultural vehicles functionally safe and reliable.

Dust and particles, vibration, moisture, cold, absolute darkness – our engineers designed and tested NightViu® Working Lights especially for agricultural applications.

Do you need versatile lighting output?

NightViu® Working Lights provide 16 lighting options with illumination up to 4,500 lumens. Available in ultra-wide, wide, flood and spot.

Does your application require a high-performance beam pattern?

With a width of 30-100 m and a length of 45-188 m, NightViu® Working Lights illuminate large, complex terrain.

Are you looking for the most efficient solution possible?

Thanks to their high efficiency, long service life and low maintenance requirements, NightViu® Working Lights are particularly efficient and economical.

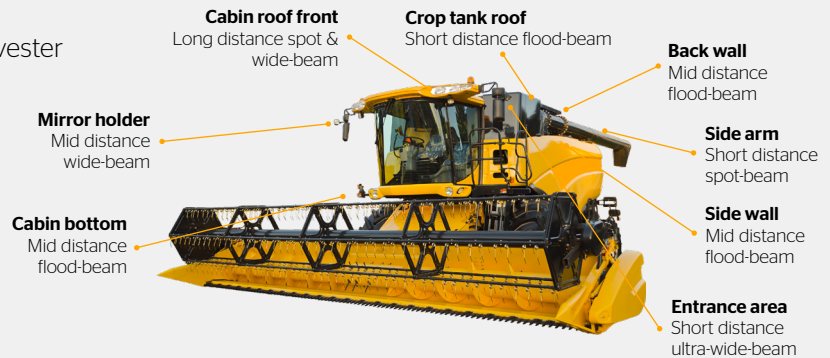
NightViu® – Continental LED Lighting

Combine harvester, powered by NightViu®.

Optimum light efficiency

- › up to 16 different positions for a combine harvester
- › with multiple light distributions
- › available in different power levels

Fewer lights for the optimum beam pattern: Our matrix system.



Using the intelligent combination of NightViu® illuminants enables you to save costs and energy.

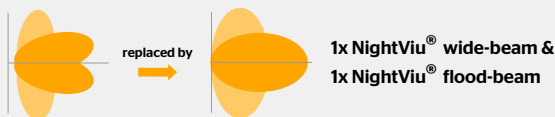
Example 1:
2 x same beam pattern in different directions



Everything compatible – everything included.

- › Multi-volt 12 V & 24 V wide range of vehicles
- › Fulfill the highest EMC / EMI and CISPR 25 Class 5 requirements
- › Flexible mounting system: heavy duty, standard & direct mount
- › Super seal integrated connector

Example 2:
4 x / 6 x different beam pattern in different directions



Do you want to illuminate your agricultural vehicles optimally, efficiently and with little maintenance?

› Get in touch now

Continental 
The Future in Motion

Continental Aftermarket & Services GmbH
Sodener Str. 9
65824 Schwalbach
Phone: +49 (0) 6196 87-0
E-Mail: info@continental-aftermarket.com
www.continental-aftermarket.com